

## Limit switch to standard EN 50041

- Series 83 861 with plunger/roller plunger
- Series 83 861 with roller lever
- Series 83 861 with adjustable roller lever
- Series 83 861 with special levers
- Series 83 863 cable-operated with manual reset

Conformity to standards	
Conformity to standards	EN 5041, IEC 947-5-1, VDE 0660/200, UL 508, CSA C22.2 No. 14, IEC 536-1, EN 60204-1, NFC 20030 class I
Protection	IP66
Electrical characteristics	
Assigned insulation voltage (Ui) V	500
Thermal current (Ith) A	10
Use category	A300 - Q300 AC15=6 A/250 V - 1.9 A/380 V DC13=3 A/24 V
Short circuit test IEC 947.5.1	
Current peak	1000 A at 250 VAC $0.5 < \cos \varphi < 0.7$
Short circuit protection (SCPD)	fuse 10 A gF
Electrical protection by internal earth terminal	•
Connections	
Saddle washer and screw	M 3.5
Max. wire cross-section	2 x 1.5 mm <sup>2</sup> / 1 x 2.5 mm <sup>2</sup>
Connection	with sealing gland PG13
Approvals	UL listed A300 - Q300 - CSA A300

# Limit switch to standard EN 50041

## → Series 83 861 with roller lever

- Adjustable metal rotary head
- 4 positions 90°
- Momentary action
- Action to right and left
- Plastic or rubber roller



### Main specifications

	With lever and plastic roller Ø22 offset 43.5	With lever and plastic roller Ø19 offset 56	With lever and rubber roller Ø50 offset 50.5	With lever and rubber roller Ø50 offset 57
<b>Housing</b>				
Metal	83 861 301	83 861 302	83 861 305	83 861 306
Metal	83 861 311	83 861 312	83 861 315	83 861 316
<b>Action</b>				
Metal	83 861 301	83 861 302	83 861 305	83 861 306
Metal	83 861 311	83 861 312	83 861 315	83 861 316
<b>General characteristics</b>				
Special option - configuration EN 50041	-	A	-	-
<b>Function</b>	NC + NO	NC + NO	NC + NO	NC + NO
<b>Sequence</b>				
<b>Snap action</b>				
<b>Sequence</b>				
<b>Dependent action</b>				
<b>Positive break operation</b>				
<b>Minimum operating force (cmN)</b>	28	28	28	28
<b>Minimum total travel force (cmN)</b>	37	37	37	37
<b>Min. positive opening travel (cmN)</b>	75	75	75	75
<b>Mechanical life (millions of operations) mini.</b>	15	15	15	15
<b>Temperature limits use (°C)</b>	-25 → +80	-25 → +80	-25 → +80	-25 → +80
<b>Temperature limits stored (°C)</b>	-40 → +80	-40 → +80	-40 → +80	-40 → +80
<b>Protection rating</b>	IP 66	IP 66	IP 66	IP 66
<b>Weight (plastic/metal) (g)</b>	340/385	340/385	340/400	340/400

### Product adaptations



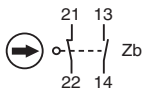
- Operating sequence
- Number of circuits
- Type of function
- Direction of head and lever
- Connection via ISO sealing gland
- Special marking
- Pre-wiring option

## Principles

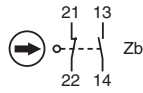
### Function

Four-terminal double break two-way contact element (form Zb) with positive opening NC contacts. The 2 moving contacts are electrically isolated from one another.

#### Snap action contact 1 NO + 1 NC



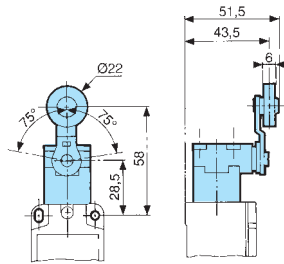
#### Dependent action contact 1 NO + 1 NC



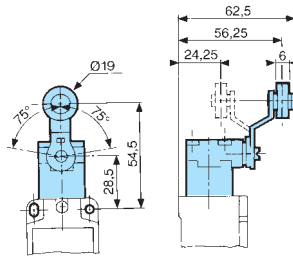
## Dimensions

### → Product

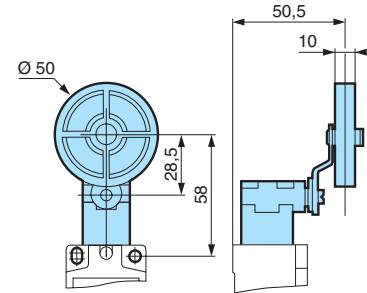
83 861 301 / 311



83 861 302 / 312



83 861 305 / 315



83 861 306 / 316

